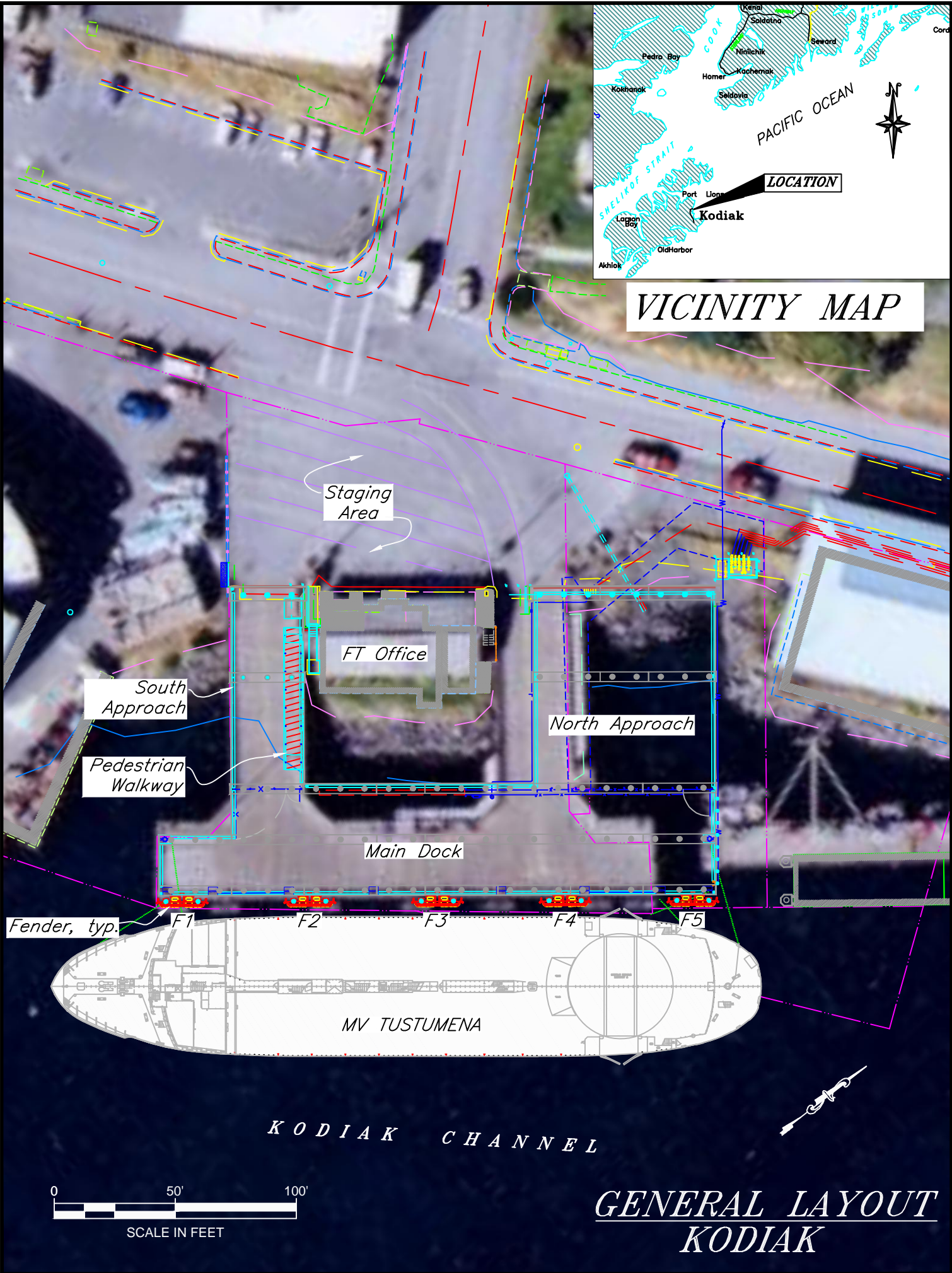


# VICINITY MAP



Staging Area

FT Office

South Approach

Pedestrian Walkway

North Approach

Main Dock

Fender, typ.

F1

F2

F3

F4

F5

MV TUSTUMENA

KODIAK CHANNEL



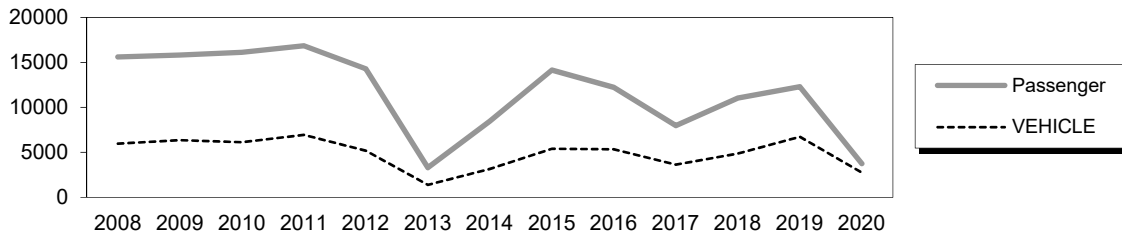
GENERAL LAYOUT  
KODIAK

# Kodiak City Dock (Pier 1)

100 Marine Way

**Owner:** City of Kodiak  
**Terminal Manager:** Amanda Becker, AMHS Terminal Manager, 907-486-3800  
 David Johnson, Harbormaster, City of Kodiak, 907-486-8080

**Terminal Description:** The M/V Tustumena docks at the Kodiak City Dock (also called Pier 1) on its east/west passage between Homer and the Aleutian Chain. The Kodiak City Dock structure is supported by steel pipe piles, with concrete pier caps, p/c concrete channel beams (approach), & p/c concrete haunched deck panels (main dock). The fender system consists of five pin-pile supported fender panels. The facility is a U-shaped concrete structure with a main dock section approximately 230'x 25', and two 103' approach trestles, one at each end of the dock. The dock is currently used for transfer of general cargo and fuel, in addition to ferry operations. The paved area between the street and the terminal building has a shared use for parking and vehicle staging. Embarking vehicles line up on the adjacent city street, in the paved area and along the 75'-wide north approach trestle. The contractor operated ticket office is located in a city owned building, on shore, between the two approach trestles. The wharf is crowded between a marine fuel service depot to the north and a shore based seafood processor to the south. Vessels moored at the adjacent facilities encroach on berthing the dock. The past 12 years of total passenger and vehicle traffic at Kodiak City Dock is shown below. The M/V Tustumena was out of service most of 2013, causing a steep drop in traffic at the terminal. The global pandemic caused the drop in 2020.



The most recent above water survey was completed on August 15th, 2022. The underwater inspection occurred on August 30, 2021.

Vessels	
Name	Berthing Alignment
Tustumena	Port / Starboard

Terminal Building
The ticket office is located in a city-owned building, on shore, between the approach structures.

Tidal Data (MLLW=0.0 feet)	
EHW	13.1
MHHW	8.7
MHW	7.8
ELW	-3.5

U-Shaped Dock - #1425	
Year Built:	2016
Dock Structure:	Steel pile supports, concrete pile caps, prestressed concrete channel beams (both approaches), & prestressed concrete haunched deck panels (main dock)
Fenders:	Five (5) pin pile supported fender panels
Mooring Bollards/Cleats :	Bollard mounted at both ends of dock; several cleats mounted to bullrail along the dock face.
Lighting:	Yes
Condition:	Good

Uplands	
Short-Term Parking:	N/A
Long-Term Parking:	N/A
Staging Area:	150 lineal feet

Generator & Building
NA

<b>Utilities @ Dock</b>	
Water:	Yes
Fuel:	Yes

<b>Terminal Projects</b>			
<b>Year</b>	<b>Project #</b>	<b>Project Name</b>	<b>Description</b>
1964	P-Alaska-3107	City of Kodiak Ferry Terminal	Construct new timber dock.
2014	68938	Kodiak Ferry Terminal & Dock Improvements	Replace aging timber dock with new concrete dock.

### GENERAL FACILITY EVALUATION

<b>Facility Component</b>	<b>Rating</b>
Uplands	6
Approach/Bridge	8
Main Dock	8
Fenders	7

9	EXCELLENT CONDITION
8	VERY GOOD CONDITION - no problems noted
7	GOOD CONDITION - some minor problems.
6	SATISFACTORY CONDITION - structural elements show minor deterioration
5	FAIR CONDITION - all primary structural elements are sound but may have minor corrosion, cracking or chipping. May include minor erosion on bridge piers.
4	POOR CONDITION - advanced corrosion, deterioration, cracking or chipping. Also significant erosion of concrete bridge piers.
3	SERIOUS CONDITION - corrosion, deterioration, cracking and chipping, or erosion of concrete bridge piers have seriously affected deck, superstructure, or substructure. Local failures are possible.
2	CRITICAL CONDITION - advanced deterioration of deck, superstructure, or substructure. May have cracks in steel or concrete, or erosion may have removed substructure support. It may be necessary to close the bridge until corrective action is taken.
1	"IMMINENT" FAILURE CONDITION - major deterioration or corrosion in deck, superstructure, or substructure, or obvious vertical or horizontal movement affecting structure stability. Bridge is closed to traffic but corrective action may put back in light service.
0	FAILED CONDITION - out of service - beyond corrective action
N	Not applicable

For a copy of the latest facility inspection reports contact the AK DOT&PF Marine Design Department. Contact information is located in the Comments and Feedback section.